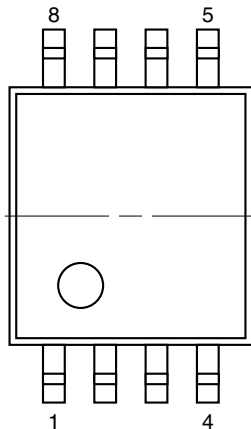
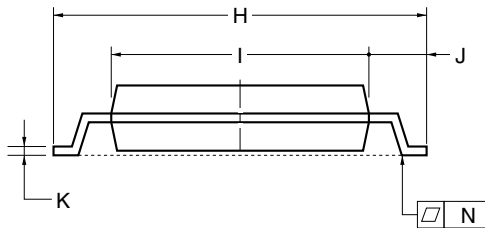
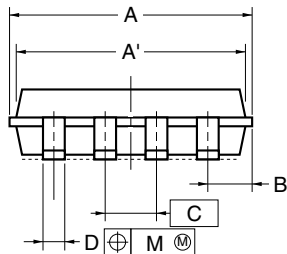
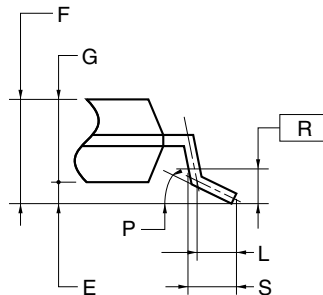


Power TSSOP8 Outline

UNIT: mm



detail of lead end



ITEM	MILLIMETERS	INCHES
A	3.15±0.15	0.124±0.006
A'	3.0±0.1	0.118 ^{+0.005} _{-0.004}
B	0.8MAX	0.032MAX
C	0.65	0.026
D	0.27 ^{+0.03} _{-0.08}	0.011 ^{+0.001} _{-0.004}
E	0.1±0.05	0.004 ^{+0.002} _{-0.003}
F	1.2MAX	0.048MAX
G	1.0±0.05	0.039 ^{+0.003} _{-0.002}
H	6.4±0.2	0.252±0.008
I	4.4±0.1	0.173 ^{+0.005} _{-0.004}
J	1.0±0.2	0.039 ^{+0.009} _{-0.008}
K	0.145±0.055	0.006 ^{+0.002} _{-0.003}
L	0.5	0.020
M	0.10	0.004
N	0.1	0.004
P	3 ⁺⁵ ₋₃	3 ⁺⁵ ₋₃
R	0.25	0.010
S	0.6 ^{+0.15} _{-0.1}	0.024 ^{+0.006} _{-0.005}

NOTES

Each lead centerline is located within 0.10 mm (0.004 inch) of its true position (T.P.) at maximum material condition.